

**hydro
pro**

AIR PUMP

**Z2010
Z4010**



1300 AQUATEC
aquatecequipment.com

QUICKSTART GUIDE

hydropro

Congratulations on your purchase of this product by

hydropro

Before using your Air Pump, please read the following instructions carefully.

PUMP MODEL	HZ2010	HZ4010
RECOMMENDED POND SIZE	UP TO 2,000L	UP TO 4,000L
MAXIMUM OPERATING DEPTH	1.2M	
AIR FLOW RATE	3.5LPM x 2	7.5LPM x 2
POWER*	3.3W	6W
VOLTS	240V	
FREQUENCY	50 HZ	
AIR STONES	X 2	
CABLE LENGTH	2M	
AIR TUBING SIZE (ID. X LENGTH)	4MM X 10M	
DESCRIPTION OF ACCESSORIES	2 X SPHERE AIR STONE, AIR-LINE & CHECK VALVES	
PRODUCT CODE	09HZ201	09HZ401

* Subject to variation according to load.

DESIGN HIGHLIGHTS

- **Quiet operation** - outer industrial plastic casing and air baffle for exceptional low noise rating.
- Rubber feet for vibration absorption.
- Robust design - excellent heat dissipation, which assists with durability and extends pump life.
- Great air flow and strong air pressure for smaller pond and water feature applications.
- No oil lubrication needed.
- Easy maintenance - replaceable internal rubber diaphragms and air filter.
- Continuous rated - designed to operate 24/7.

VISIT AQUATECEQUIPMENT.COM

AIR PUMP INSTRUCTION MANUAL

BENEFITS INCLUDE

The Hydropro Aeration Kits have been manufactured with advanced technology to provide you with the best quality aeration for smaller scale ponds or water features.

Visit our website to view our range of pond filtration, outdoor/underwater lighting, water treatments and general accessories. Hydropro Aeration Kits are suitable for many different applications including aquariums and small scale fish pond/water garden applications.

Aeration is a very effective method of enhancing pond fish habitats, improving water quality, reducing algae, and removing phosphorus. Aeration can also break down unwanted bacteria, help with mosquito problems, and remove foul odours from an aquarium or pond -- all by circulating the water and adding dissolved oxygen.



IMPORTANT SAFEGUARDS

Please read the operating instructions and familiarize yourself with the equipment before placing it in service. Correct and safe use of the system requires strict compliance with these safety instructions. For safety reasons persons less than 16 years of age or persons that are not familiar with these instructions, should not use this equipment.

- Any damage to the equipment or unmerited operation can potentially bring dangers to the surrounding precincts. If there is any damage of the equipment, it must not be used. The equipment should be placed out of reach of children.
- For your own safety, completely disconnect all electrical appliances before any maintenance of equipment is attempted on/in the tank or body of water. Always unplug the air pump from the power supply when not in use. Never pull the cable to disconnect the plug from the power supply - Grasp the plug and pull to disconnect. Care should be taken to ensure the power cable is situated to avoid a tripping hazard.
- Cutting the cable may void your warranty.
- If required, have a qualified electrician install a weatherproof power supply point in reach of the water-feature (within the cable length of the appliance). For applications within the US or Canada- make sure to plug the pump into an electrical outlet with a (GCFI) Ground Fault Circuit Interrupter.
- To prevent electric shocks, do not attach the plug to the power supply socket with wet hands. On installation, the drip loop method should be used to prevent water from traveling down the cable and onto the plug or into power supply. If the plug does get wet, do not unplug the cable. Immediately disconnect the circuit breaker that supplies power to the power supply point. Unplug and examine the plug and power supply point for the presence of water. If the power point has become wet, you should consult an electrician before using the power point again.
- Do not submerge air pump directly in water. The distance from air pump to the water's edge, should not be less than 6ft/1.8 m.
- Do not operate the appliance if any components of the system, such as the power cable, have been damaged. Check appliance and components of the kit for defects regularly.
- Do not install or store the appliance where it will be exposed to extreme hot or cold temperatures. Do not use in ambient temperatures above 95°F/35°C
- Do not attempt to repair the electrical appliance yourself. Return to an authorized dealer or place of purchase if a fault occurs. Regular maintenance is not considered a repair (e.g. replacing the diaphragms and air filter is required by user).

hydropro

PRODUCT SPECIFIC SAFEGUARDS

- Be sure the air pump itself is not submersed in water.
 - The air pump is designed to be used in garden pond or aquarium applications. It is not to be used in any other manner or purpose. Do not use the pump in, or in conjunction with, any chemicals such as a solvent or gasoline or flammable gases. The pump is designed to pump clean atmospheric air only.
 - Every air pump may eventually “wander” or “creep” due to its own vibration. Avoid this by placing it on an entirely level and flat plane. We recommend securing it with some wire or cable tie to anchor the bottom of the air pump.
 - Hydropro air pumps are cooled by air flowing through the inside of the motor body chamber. If the air flow becomes restricted it will overheat and could cause permanent damage to the electrical components internally. In the event that the tubing provided isn't long enough, keep in mind that large tubing size is strongly recommended to deliver adequate flow over longer distances.
- This reduces friction loss within the tubing itself. The air pump air filter needs to be cleaned regularly to prevent the pump becoming clogged with dust, causing the airflow to reduce. In this event motor burnout is not a warrantable event.
- Never leave the air pump running without sufficient counter pressure (air stones). This may potentially cause the rubber diaphragms to wear or tear prematurely. The overall performance will also be greatly reduced.
 - The Hydropro air pumps are designed to operate at a maximum depth of 4Ft/1.2m of water. Greater depth will increase diaphragm wear.
 - As with all air pumps, wear and tear will inevitably occur over time. Hydropro air pump diaphragm assemblies are easy to replace. Only use original Hydropro parts and accessories for the unit. Check the diaphragm replacement instructions and detailed diagrams later on in this manual.

INSTALLATION & MAINTENANCE

The Aeration Kit is designed for oxygen enrichment via the provided air stones and the airline. For your convenience the Hydropro Aeration Kits include, but are not limited to the following:

1. 50mm round air stones (x2)
2. Clear airline tubing (x2)
3. Spare rubber diaphragm set (for future maintenance)
4. Plastic check valves (x2)

Start by removing entire contents from aeration kit carton. Next unroll the clear airline tubing needed for your application. Tubing can easily be cut to any length using cutters or a knife. (NOTE: Always use the minimum amount of tubing needed for your application, so as not to put needless pressure

on the air pump which could cause premature failure.)

Now locate the two air stones and push one of the ends of each airline tubing roll onto the plastic ports on both air stones. Then connect the remaining ends of each roll directly onto each of the two ports on air pump.

Place the air stones in the water and if desired, weigh down the airline with suitable weights (e.g., fishing weights, rocks, aquatic plants, etc.) to avoid flotation. For best results air stones should be far enough apart to allow the maximum amount of water movement in the pond or water feature.

AIR PUMP INSTRUCTION MANUAL

It is also recommended that the air pump should be at least 6Ft/2m away from the water's edge; this ensures that there is no intake of moisture.

The air pump is considered weatherproof but must be mounted above the water level of pond or water feature at all times. If possible, mount pump in a cool, shaded location for long-lasting results.

Once the airline is connected onto pump and air stones are in desired location within the pond or water feature. Go ahead and locate the two blue plastic check valves within the box. These check valves are designed to prevent water from entering the pump through the airline, in the event that system is turned off or if pump was to fail.

NOTE: These one-directional check valves require installation in the correct direction ("IN"= Inlet side "OUT"= Outlet side). Install the check valves on each of the 3/16" airlines, within 1-2ft from the ports on pump. Simply cut each of the air lines at desired location and push the check valve into airline on both sides of valve. Now the installation is complete and ready for operation!

The air pump is considered weatherproof but must be mounted above the water level of pond or water feature at all times. If at all possible, mount pump in a cool, shaded location for minimal temperature operation, resulting in long-lasting results and satisfaction.

CLEANING AIR FILTER PAD



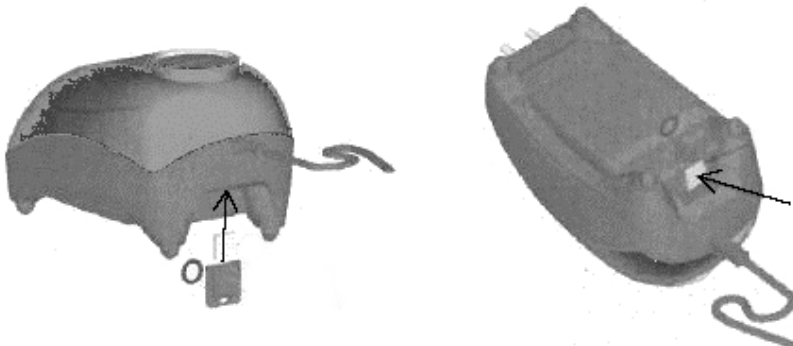
IMPORTANT SAFEGUARDS

WARNING: Make sure to unplug power prior to performing maintenance on the air pump or any of its accessories. We recommend general maintenance of the unit every 3 months (more or less depending on application).

The air filter cartridge on the pump is located on the bottom of pump, near where power cord exits the pump plastic casing.

The filter pad can get clogged up in time and needs to be cleaned as part of on-going maintenance. It can easily be removed by flipping the pump over and using a screw driver to pry filter cartridge out of pump casing, using the little hole in cartridge frame.

A standard household vacuum cleaner is ideal for the suction of dust and debris caught in the air filter pad or clean in water and make sure to dry completely before re-installation. Filter cartridge is sealed with an O-ring, make sure not to damage O-ring while disassembling or misplace while cleaning pad.

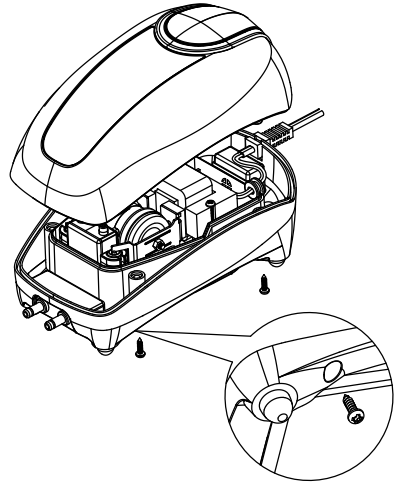


hydropro

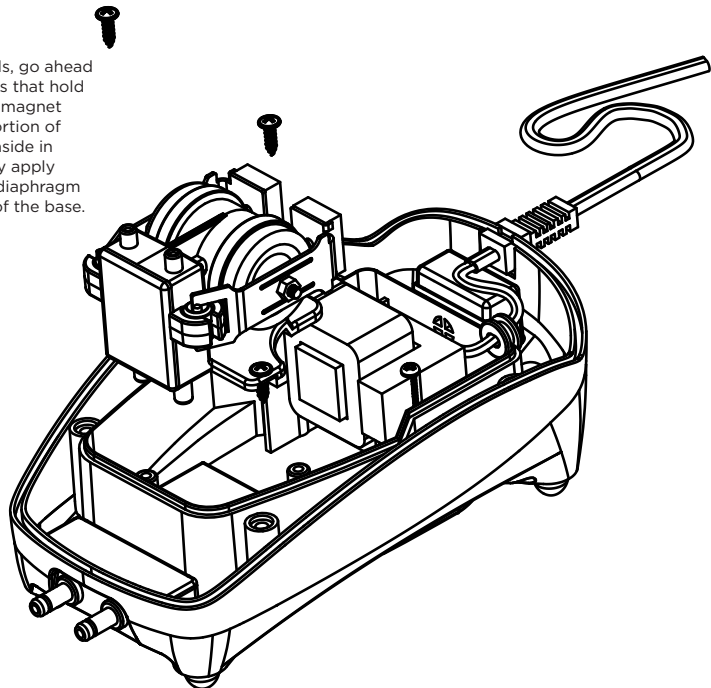
CHANGING DIAPHRAGMS

If the air flow on the pump has decreased or if there is a "ticking" sound coming from the air pump, the unit must be turned off immediately. This is typically a symptom of the rubber diaphragms wearing out and needing to be replaced. To do this, it is necessary to disassemble the internals of the air pump.

1. Flip the air pump so it's upside down and locate the 4-Phillips screws on the bottom portion of plastic casing and loosen.
2. Once the screws have been removed, go ahead and remove the top section of plastic casing from the bottom and set aside.



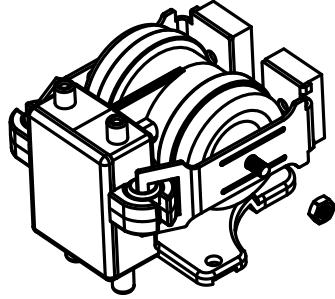
3. Now looking at the internals, go ahead and undo the Phillips screws that hold the rubber diaphragm and magnet assembly to the bottom portion of plastic casing. Set screws aside in a secure location and firmly apply pressure to lift the rubber diaphragm and magnet assembly off of the base.



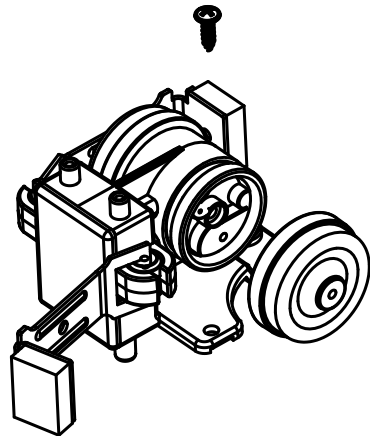
VISIT AQUATECEQUIPMENT.COM

AIR PUMP INSTRUCTION MANUAL

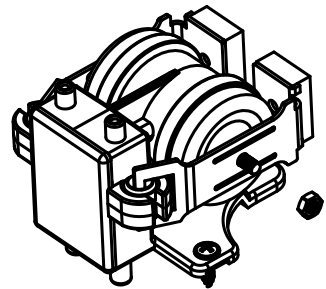
4. Now loosen and remove the nuts on either end of rubber diaphragms.



5. Swing the metal arms that hold the magnet, away from the rubber diaphragms. Release both of the rubber diaphragms from the plastic frame by applying light pressure to the edge of rubber, to fully release them from groove.
6. Once rubber diaphragms are free from the plastic frame, go ahead and remove screws from each one of the old rubber diaphragms and re-insert onto the new rubber diaphragms.

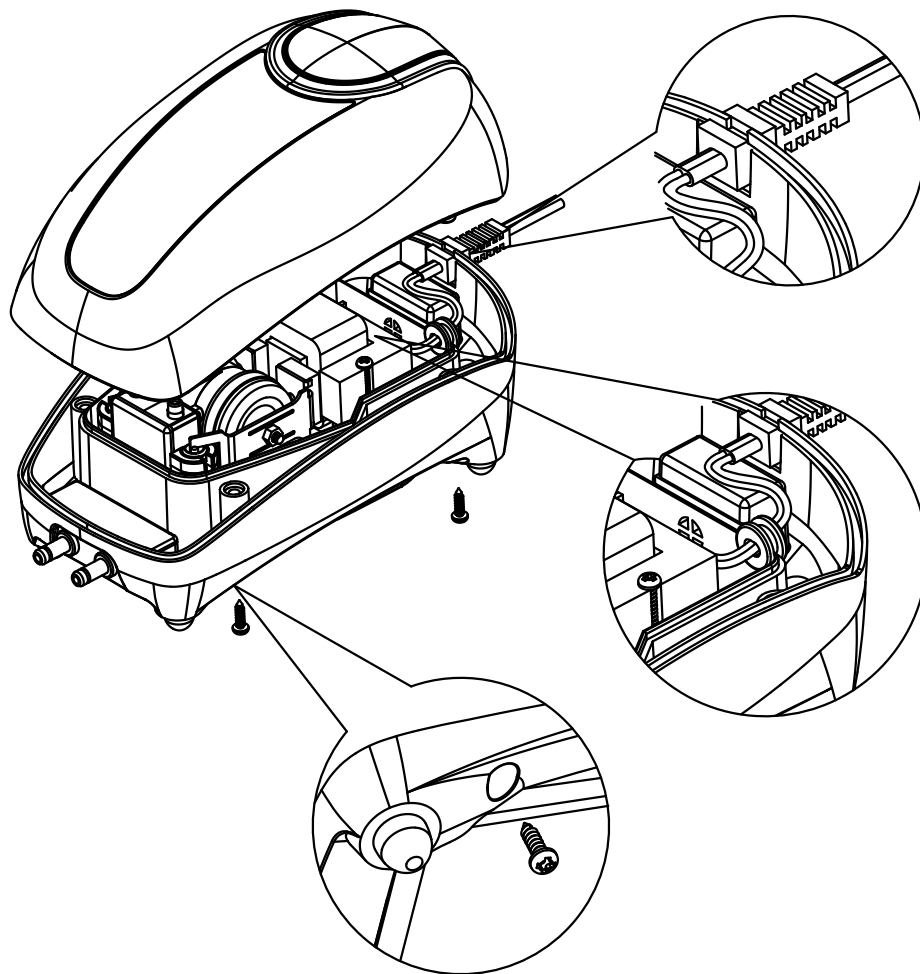


7. Now install both of the new rubber diaphragms onto the plastic frame securely by applying light pressure until fully seated in plastic groove all the way around rubber.
8. Next swing the metal arms that hold the magnet back into position towards the rubber diaphragms, making sure to line up the holes with threads from screws in center of rubber diaphragms.
9. Now install and tighten the nuts on either end of diaphragms. Take care not to over-tighten.



hydropro

10. Set the rubber diaphragm and magnet assembly back onto the base of air pump. Now reinstall Phillips screws that hold the magnet and diaphragm assembly to the bottom portion of plastic casing.
11. The power cable should fit snugly back into the recesses of the plastic casing. Do not allow it to be pinched.
12. Complete the operation by fastening all 4-Phillips screws back into their original position underneath the air pump.

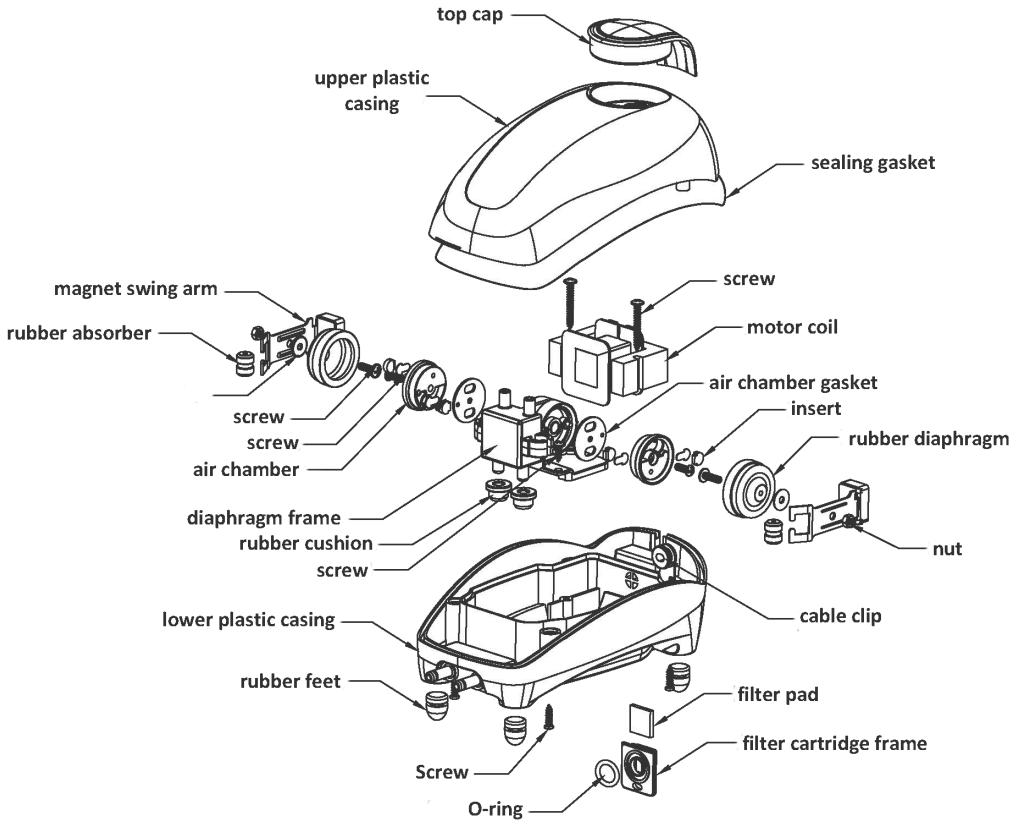


Note: If this repair is felt to be too challenging or tools are not available to carry out these steps, please take the unit back to the Authorized Dealer or place of purchase, to request assistance.

VISIT AQUATECEQUIPMENT.COM

AIR PUMP INSTRUCTION MANUAL

PARTS BREAKDOWN



AVAILABLE REPLACEMENT PARTS

DESCRIPTION		
REPLACEMENT DIAPHRAGM COMPLETE ASSEMBLY	11HZ975	11HZ976
REPLACEMENT AIR FILTER CARTRIDGE	ORDER ON REQUEST	
REPLACEMENT AIR LINE CHECK VALVE, 2 PACK	ORDER ON REQUEST	
Hydropro AIR STONE 2" SPHERE	03PA307	
Hydropro AIR TUBING 3/16" X 300'	03PA308	

VISIT AQUATECEQUIPMENT.COM

TROUBLESHOOTING

PROBLEM	REASON	SOLUTION
PUMP NOT WORKING	No Power	Check that the plug on power cable is connected to power and confirm that power point is working.
	Bad Motor	Replace the air pump (if applicable).
	Damaged Cable	Inspect the entire length of the air pump cable and look for cuts or damage resulting in exposed copper wire. Replace cable or complete unit.
PUMP WORKING INTERMITTENTLY	Damaged Cable	Inspect the entire length of the air pump cable and look for cuts or damage resulting in exposed copper wire. Replace cable or complete unit.
	Short Circuit/Bad Connection	Inspect the entire length of the lighting system cable and look for cuts or damage resulting in exposed copper wire. Replace cable or complete fixture where the damage is.
	Defective Lamp	Inspect the lamp socket is not damaged and make sure that the inside of fixture is free of moisture. Replace the lamp.
	Air Filter Sponge Clogged	Disassemble top of pump per these instructions and check the air filter sponge for discoloration, caused by dust or dirt. Using a household style vacuum cleaner, suck debris out of sponge until visibly clean. And reinstall.
	Bad Diaphragms	Disassemble pump per these instructions and check the diaphragms for excessive wear and tear or possible tearing. If diaphragm is damaged, go ahead and replace before operating the unit again.
PUMP WORKING WITH MINIMAL AIR FLOW OR MAKING LOUD NOISES	Bad Diaphragms	Disassemble pump per these instructions and check the diaphragms for excessive wear and tear or possible tearing. If diaphragm is damaged, go ahead and replace before operating the unit again.
	Air Filter Sponge Clogged	Disassemble top of pump per these instructions and check the air filter sponge for discoloration, caused by dust or dirt. Using a household style vacuum cleaner, suck debris out of sponge until visibly clean. And reinstall.
	Airline Is Kinked or Clogged	Inspect the entire length of the airline tubing for possible kinks or debris inside the clear tubing. Replace tubing if damaged or brittle.

AIR PUMP INSTRUCTION MANUAL

LIMITED WARRANTY

- Warranty covers only appliance defects and faulty material and workmanship within a 2 year period.
- If the pump fails due to a manufacturing fault within the warranty period, the pump will be either repaired or replaced free of charge.
- Faults arising due to; accidents, misuse, not following manufacturer's guidelines/ instructions or power surges/spikes/brownouts will not be covered.
- The diaphragm assembly is a consumable item and is therefore not covered under warranty. Replacement parts are available from your local retailer/special orders.
- Warranty will be void if any tampering removal of warranty labels or electrical circuitry is evident.
- Warranty will be void if the power cord is cut or damaged in any way.
- Warranty will be void if any visible signs of overheating are present.
- The manufacturer or distributor shall not be held responsible for any damages caused by defective components or materials, or for loss incurred because of the interruption of services or any consequential or incidental damages or expenses arising from the manufacture, sale, use, or misuse of this product.
- Warranty claims caused by installation or servicing faults will not be covered.
- It is the customer's responsibility to return the faulty appliance for any warranty claim to Aquatec.
- For any warranty to be valid, an original proof of purchase must be provided.
- Our goods come with guarantees that cannot be excluded under the Australian Consumer Law. You are entitled to a replacement or refund for a major failure and for compensation for any other reasonably foreseeable loss or damage. You are also entitled to have the goods repaired or replaced if the goods fail to be of acceptable quality and the failure does not amount to a major failure.

Note: Please consult your retailer for quality original **hydropro** replacement parts for your **hydropro** product.



www.aquatecequipment.com