



# HYDROGARDEN

ELITE

INDOOR GARDEN KIT

## HYDROGARDEN ELITE USER MANUAL



SAA Approvals Pty Ltd  
AS 61347.2.13:2018  
AS/NZS 61347.1:2016



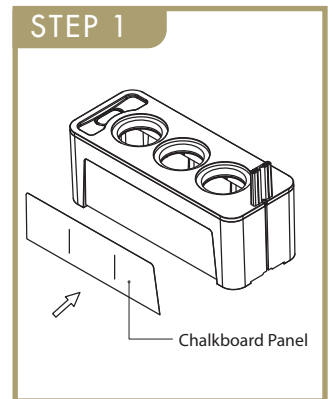
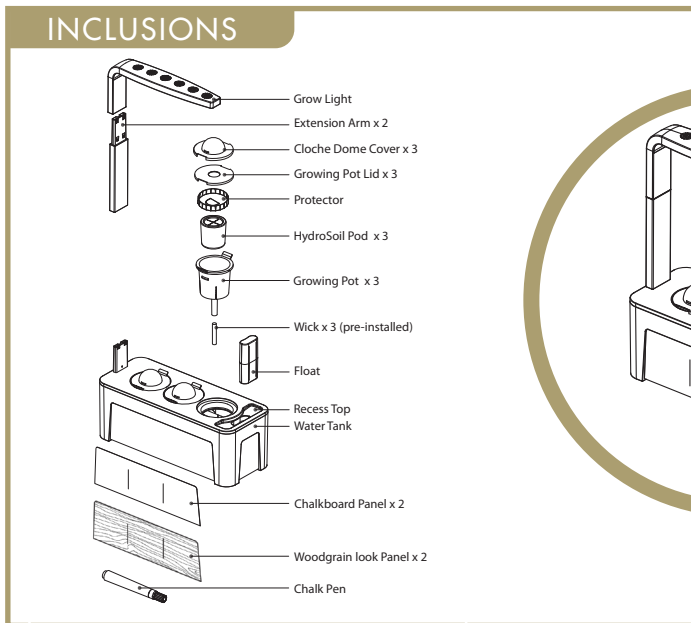


# HYDROGARDEN

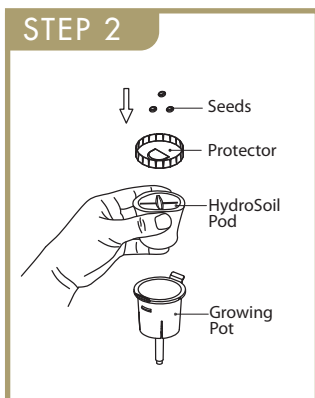
ELITE

## INDOOR GARDEN KIT

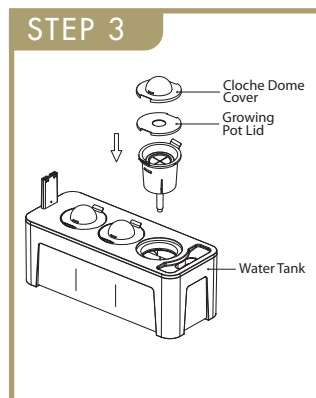
Using your HydroGarden Elite is easy - just follow these steps



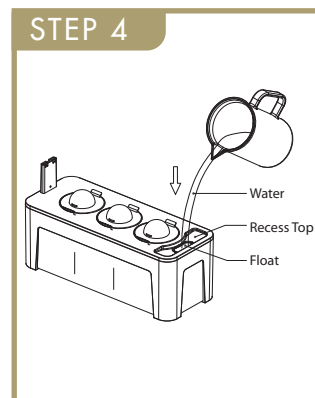
Remove the protective film from the back of the chalkboard panel and carefully adhere it to the recess provided on both sides of the tank. Use your chalk pen to label the panel below each corresponding pot. Alternatively, use the wood finish panel to suit your decor.



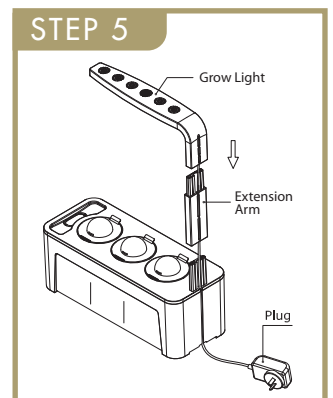
Remove and discard the protector. Squeeze the HydroSoil Pod to widen the slit and evenly distribute your seeds. Gently place the HydroSoil Pod into the growing pot.



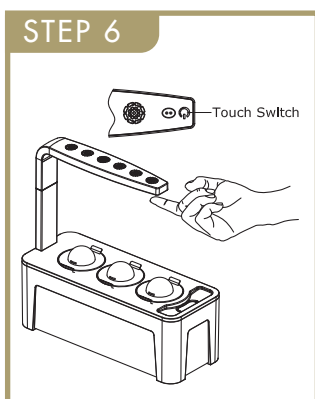
Insert the growing pot into the water tank. Place the cloche covers over the pots to assist with germination. Placing the pot lid under the cloche cover is optional and only recommended if seeds are sown in the middle of the growing pot.



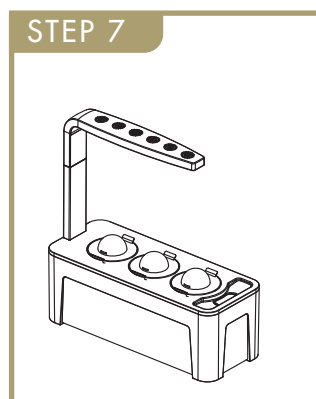
Carefully pour water into the reservoir until the float is level with the recess top. Do not overfill as this will flood the HydroSoil Pod. Note: The red marker at the bottom of the float chamber is an indication of low water level.



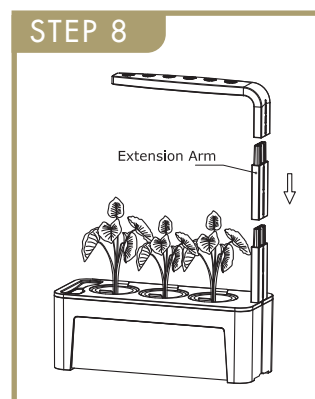
Assemble the grow light and an extension arm and click onto the base as shown. Plug adapter into a power point.



To turn your grow light on, gently tap the touch switch located on the underside of the grow light. Tap once for germination and general growing. Tap twice for the red light to help flowering and fruiting.



Once the unit is turned on, the automatic inbuilt timer allows the grow light to cycle through 16 hours of light and 8 hours of darkness, on both light settings.



When your seeds have germinated, remove the cloche covers. As your plants grow, you can use the second extension arm to raise the height of the grow light.



Cleaning Instructions: Remove the grow light, extension arms, growing pots and float for cleaning. Use warm tap water and some mild washing liquid to clean the water tank. Rinse thoroughly.



# HYDROGARDEN

## ELITE

### INDOOR GARDEN KIT

## GROWING GUIDE

- The HydroGarden Elite has a built-in timer which allows the light to turn itself off at the end of the day. To set the timer, simply turn the light on by tapping the touch switch on the underside of the grow light. The light will stay on for 16 hours and then turn itself off automatically, turning back on again after 8 hours. Then just leave the plants to grow! The unit features a red marker on the bottom of the float chamber to indicate low water level.
- The HydroSoil Pod features pre-cut slits for easy insertion of seeds and also contains slow-release fertiliser granules. With NPK levels of 10:11:18, the fertiliser is ideal for hydroponic growing. When the HydroSoil Pod is inserted into the growing pot and inserted into the HydroGarden Elite unit, water activates the slow-release fertiliser to ensure even and controlled nutrients.
- Adjust the height of the grow light as your plants get taller by adding the second extension arm. With some plants, such as basil, you can maintain the short and bushy habit by snipping off the growing tips.
- When plants start to turn woody or stop producing fresh growth, it's time to pull them out and start again. Simply remove the plant, root system and HydroSoil Pod from the growing pot and discard. Clean the unit and growing pots with warm water and a mild washing liquid, and rinse thoroughly. Refill with new HydroSoil Pods, seeds and water.
- The full spectrum grow light has been optimised to effectively replace the sun with photosynthesised light suitable for most environments. The grow light is built with two interchangeable modes.
  - White light: suitable for plant germination, vegetative stages and making your plants grow stronger.
  - Red light: used at the flowering stage to encourage your plants to sprout buds, prolong flowering and increase the amount of leaves.
- The HydroGarden Elite is suitable for growing seeds of almost any compact size flower, vegetable or herb. For more ideas on what varieties you can grow, visit our website - [www.mrfothergills.com.au](http://www.mrfothergills.com.au) (Australia) or [www.mrfothergills.co.nz](http://www.mrfothergills.co.nz) (New Zealand).

**GUARANTEE** - All of our seeds come with a growing guarantee - if they don't grow for whatever reason, we will replace them.

## IDEAL GROWING LOCATION FOR HYDROGARDEN ELITE

- A sturdy, level and water-tolerant surface.
- Near a standard electrical outlet.
- Away from children or pets.
- Away from direct source of heat (e.g. a stove) or cold draft during Winter.
- Far enough from wash basin or sink to avoid it falling in water.
- Away from direct sunlight, but ideally not in complete darkness either. Allowing some natural light in addition to provided light source is beneficial to your plant growth.
- Note that the ideal temperature for the plants to grow is 16-26°C. During Summer heat, move the unit to a cooler part of the house, and during Winter chill, into a warmer location. The full spectrum grow light does not provide heat, only light.
- For best results, change the reservoir water monthly. Rinse the unit and replace with clean water.

## SAFETY INSTRUCTIONS

Only use the HydroGarden Elite in indoor areas, connected to a properly installed AC 240V socket with an appropriate safety switch. Any piggyback plug or ordinary plug should be fitted with the appropriate safety switch. Fully unwind extension cords before use as they may overheat. Ensure that you don't stack plugs, as it can overload power points and cause a fire.

### USER MAINTENANCE

Doing electrical work yourself can be dangerous and people have been killed doing electrical work unsafely. By law, any electrical installation work must be done by a licensed electrician. The work should be tested and you should be supplied with a uniquely numbered Certificate of Compliance Electrical Work to ensure it complies with regulation.

### DO NOT SUBMERGE

Do not immerse the cord or any of the electrical equipment in water or other liquid. Unplug the cord from any electrical outlet when not in use. If liquid spills onto the HydroGarden Elite, unplug it and have it checked before using again.

### RISK OF ELECTRIC SHOCK

Never touch the mains plug with damp hands. Never pull the mains plug out of the socket by the mains cord, always do so by taking hold of the mains plug. Always switch the unit off and pull the mains plug out of the socket when you are not using the HydroGarden Elite, cleaning it or in the event of a fault. Disconnect power before servicing or replacing lights. Only use the HydroGarden Elite as described in this user manual. Any other use is deemed improper and may result in damage to property or even personal injury. The HydroGarden Elite is not a children's toy and children using it must be supervised by an adult at all times. Always treat a 'tingle' or slight shock as a warning. Never touch an appliance which causes a 'tingle' or shock until it is repaired by an approved repairer.

### FOR HOUSEHOLD USE ONLY

The HydroGarden Elite is not intended for commercial use and is for domestic and personal use only. Mr Fothergill's Seeds Pty Ltd takes no liability for damage caused by improper or incorrect use.





# HYDROGARDEN

ELITE

## INDOOR GARDEN KIT

### WARRANTY DETAILS

The HydroGarden Elite is guaranteed to be free from defects in workmanship and parts for a period of 12 months from the date of purchase. Defects that occur within this warranty period, under normal use and care, will be repaired, replaced or refunded at our discretion. The benefits conferred by this warranty are in addition to all rights and remedies in respect of the product that the consumer has under the Competition and Consumer Act 2010 and similar state and territory laws. Our goods come with guarantees that cannot be excluded under the Australian Consumer Law. You are entitled to a replacement or refund for a major failure. You are also entitled to have the goods repaired or replaced if the goods fail to be of acceptable quality and the failure does not amount to a major failure.

**PROOF OF PURCHASE** – This warranty is valid for the original purchase and is not transferable. Please keep your purchase docket, tax invoice or receipt as proof of purchase, and proof of date on which the purchase was made.

**NORMAL WEAR AND TEAR** – This warranty does not cover normal wear and tear to the products or parts.

**EXCLUSIONS** – This warranty does not cover:

- Any defects caused by an accident, misuse, abuse, improper installation or operations, lack of reasonable care, unauthorised modification, loss of parts, tampering or attempted repair by a person not authorised by the distributor.
- Any product that has not been installed, operated or maintained in accordance to manufacturer's operating instructions provided with this product.
- Any product that has been used for purposes other than domestic use.
- Any damage caused by improper power input or improper cable connection.

#### TO MAKE A CLAIM:

Contact Mr Fothergill's Seeds via phone, letter or website contact form.

When making a return, please ensure the product is properly packaged so as to ensure no additional damage occurs to the product in transit. Please provide the original or a copy of the proof of purchase. Please also ensure you have included an explanation of the problem as well as your contact details.

If you have any questions please feel free to contact our customer service representatives on 02 4571 6200 (Australia) or 0800 663 740 (New Zealand).

For a full copy of our Warranty terms and conditions please go to: [www.mrfothergills.com.au/hydrogardenelitewarranty](http://www.mrfothergills.com.au/hydrogardenelitewarranty)

---

#### AUSTRALIA

Mr. Fothergill's Seeds  
PO Box 6065  
South Windsor, NSW 2756  
[www.mrfothergills.com.au](http://www.mrfothergills.com.au)

#### NEW ZEALAND

Mr. Fothergill's Seeds  
PO Box 6174  
Victoria Street West, Auckland 1142  
[www.mrfothergills.co.nz](http://www.mrfothergills.co.nz)

